

**SUBMITTAL DATA: SEZ-KD18NA**

18,000 BTU/H HORIZONTAL-DUCTED INDOOR UNIT FOR MXZ MULTI-ZONE HEAT-PUMP SYSTEMS

|                           |  |             |
|---------------------------|--|-------------|
| Job Name: _____           | Location: _____  | Date: _____ |
| Purchaser: _____          | Engineer: _____  |             |
| Submitted to: _____       | For <input type="checkbox"/> Reference <input type="checkbox"/> Approval <input type="checkbox"/> Construction |             |
| System Designation: _____ | Schedule No.: _____  |             |

**GENERAL FEATURES**

- Ceiling-concealed ducted indoor unit for residential applications
- Ultra thin body: 7-7/8" high
- Built-in drain mechanism for condensate removal; lifts to 21-11/16"
- Air filter is included with indoor unit
- Quiet operation — as low as 23 dBA
- PAR-21MAA wired remote controller is included
- Indoor unit powered from outdoor unit using A-Control
- Automatic fan speed control
- Auto restart following a power outage
- Limited warranty: one year on parts and defects

**OPTIONAL ACCESSORIES**

- M-NET Control Adapter (MAC-399IF)
- External Heat Adapter (PAC-YU25HT)
- CN24 Relay Kit (CN24RELAY-KIT-CM)
- Three-pole Disconnect Switch (TAZ-MS303)

**Cooling\***

Rated Capacity . . . . . 17,200 Btu/h  
 Total Input . . . . . 90 W  
 Current . . . . . 0.74 A

**Heating\***

Rated Capacity . . . . . 20,100 Btu/h  
 Total Input . . . . . 70 W  
 Current . . . . . 0.63 A

\* Rating Conditions (Cooling) - Indoor: 80°F (27°C) DB / 67°F (19°C) WB.  
 Outdoor: 95°F (35°C) DB / 75°F (24°C) WB.  
 (Heating) - Indoor: 70°F (21°C) DB / 60°F (16°C) WB. Outdoor: 47°F (8°C) DB / 43°F (6°C) WB.

(For data on specific indoor units [all ducted, all non-ducted, and both ducted and non-ducted] combinations, see the MXZ Technical and Service Manual.)

**Electrical Requirements**

Power Supply . . . . . 208 / 230V, 1-Phase, 60 Hz  
 MCA . . . . . 1 A

**Voltage**

Indoor - Outdoor S1-S2 . . . . . AC 208 / 230V  
 Indoor - Outdoor S2-S3 . . . . . DC 24V



Indoor Unit: SEZ-KD18NA



Remote Controller: PAR-21MAA

**Fan**

Type x Quantity . . . . . Sirocco Fan x 4  
 Motor . . . . . Direct-driven DC Brushless Motor  
 Motor Output . . . . . 96 W  
 Airflow (Lo - Med - Hi) . . . . . 423 - 529 - 635 CFM  
 Air Filter . . . . . Polypropylene Honeycomb  
 External Static Pressure . . . . . 0.02 - 0.06 - 0.14 - 0.20" WG  
 Sound Pressure Level (Lo - Med - Hi) . . . . . 30 - 34 - 38 dB(A)

| DIMENSIONS | UNIT INCHES / MM |
|------------|------------------|
| W          | 46-7/8 / 1,190   |
| D          | 27-9/16 / 700    |
| H          | 7-7/8 / 200      |

Weight . . . . . 60 lbs. / 27 kg

Field Drainpipe Size O.D. . . . . 1-1/4" / 32 mm  
 Wall-mounted Remote Controller . . . . . PAR-21MAA  
 (See Data Submittal Sheet)

Refrigerant Type . . . . . R410A  
 Refrigerant Pipe Size O.D.  
 Gas Side . . . . . 1/2" / 12.7 mm  
 Liquid Side . . . . . 1/4" / 6.35 mm  
 Connection Method . . . . . Flared

**MXZ MULTI-ZONE HEAT-PUMP OUTDOOR UNITS**


Outdoor Unit: MXZ-3A30NA

**MXZ MULTI-ZONE SYSTEMS CAN INCLUDE:**

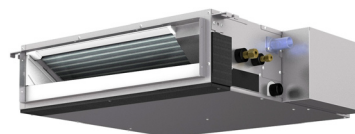
- All Horizontal-ducted Indoor Units:  
**SEZ-KD09, 12, 15, 18NA**
- Select Wall-mounted Indoor Units:  
**MSZ-A09, 12, 15, 17, 24NA**  
 and  
**MSZ-FD09, 12NA**
- A combination of both Horizontal-ducted and Wall-mounted Indoor Units  
 Refer to the separate submittal forms for the MSZ-A and MSZ-FD Indoor Units and MXZ Outdoor Units.

**MXZ COMPATIBLE INDOOR UNITS AND REMOTE CONTROLLERS**


Wall-mounted Indoor Unit: MSZ-A09, 12, 15, 17, 24NA



Wall-mounted Indoor Unit: MSZ-FD-NA


 Wireless Remote Controller -  
 Packaged with MSZ-A and MSZ-FD  
 (Optional Wired Remote Controller  
 PAR-21MAA)


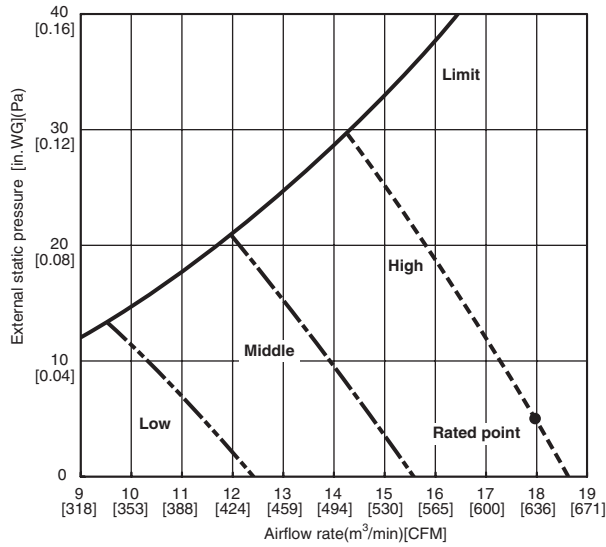
Horizontal-ducted Indoor Unit: SEZ-KD-NA


 Remote Controller  
 PAR-21MAA -  
 Packaged with SEZ


# SEZ-KD18NA INDOOR FAN PERFORMANCE AND CORRECTED AIR FLOW CHARTS

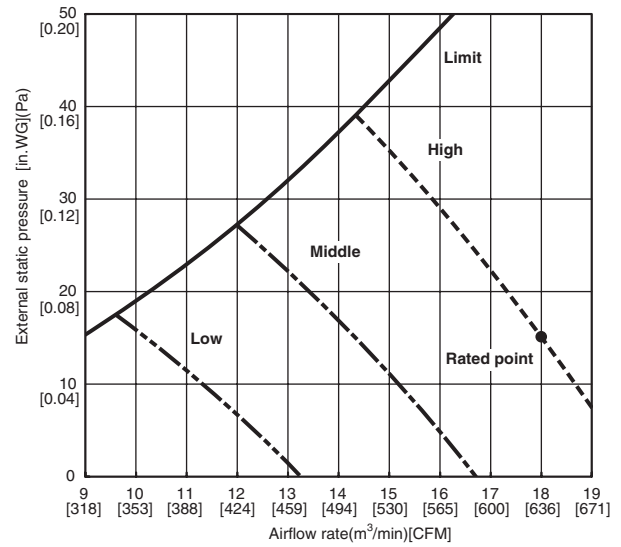
## SEZ-KD18NA

(External static pressure 0.02[in.WG](5Pa)) 208/230V 60Hz



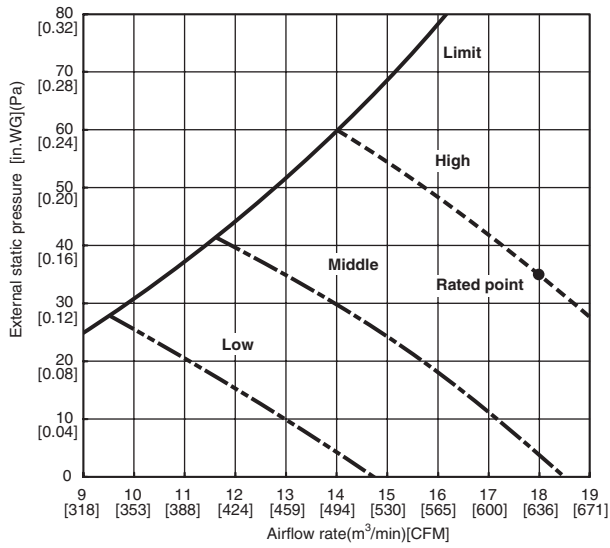
## SEZ-KD18NA

(External static pressure 0.06[in.WG](15Pa)) 208/230V 60Hz



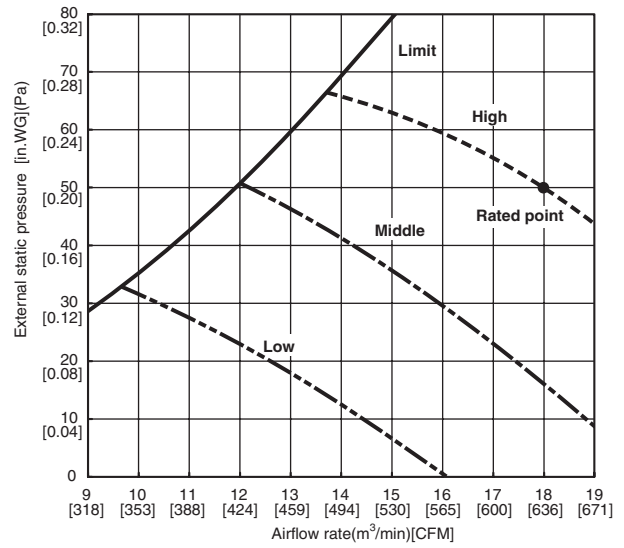
## SEZ-KD18NA

(External static pressure 0.14[in.WG](35Pa)) 208/230V 60Hz



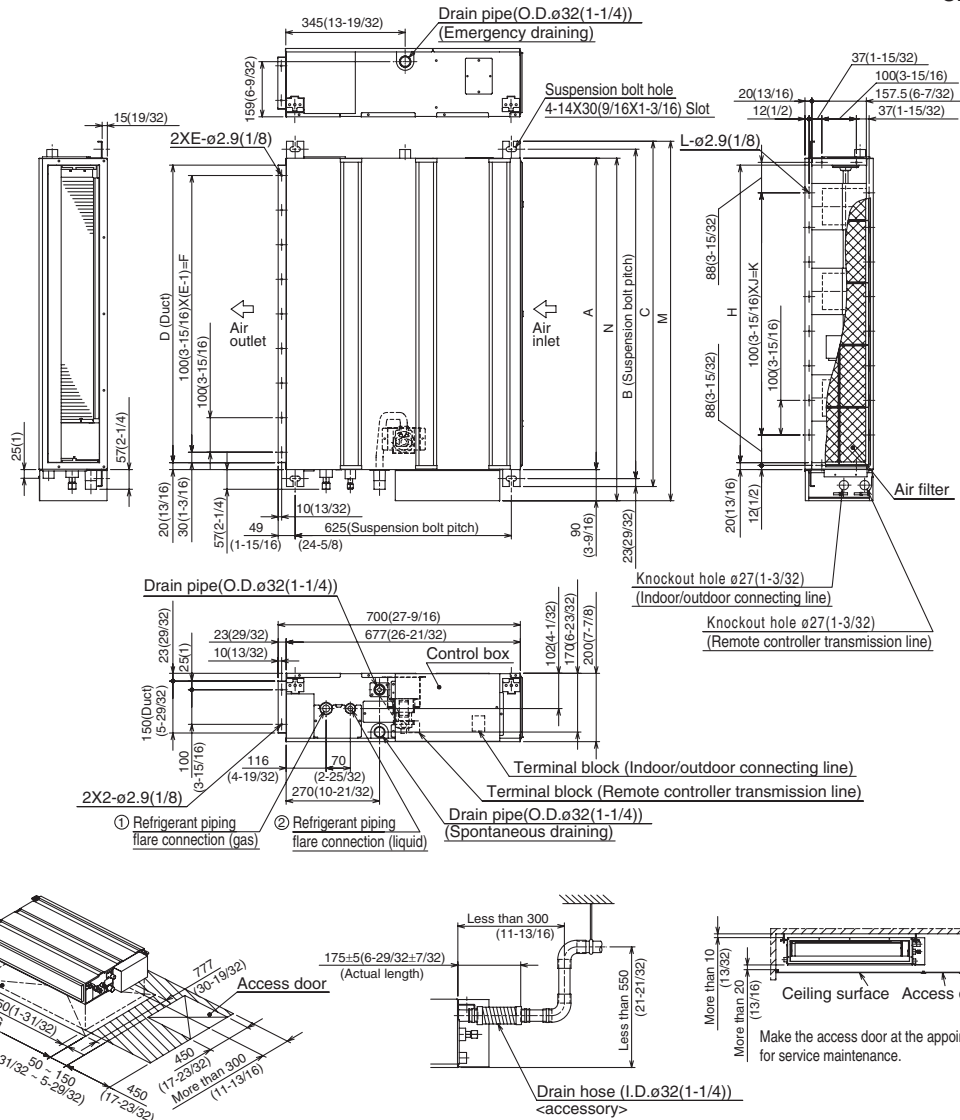
## SEZ-KD18NA

(External static pressure 0.20[in.WG](50Pa)) 208/230V 60Hz



# DIMENSIONS: SEZ-KD18NA

Unit : mm(in.)



Required space for service and maintenance

| Model      | mm(in.)           |                  |                   |                  |    |                  |                  |                  |   |                   |    |                    |                  |            | mm(in.)       |  |
|------------|-------------------|------------------|-------------------|------------------|----|------------------|------------------|------------------|---|-------------------|----|--------------------|------------------|------------|---------------|--|
|            | A                 | B                | C                 | D                | E  | F                | G                | H                | J | K                 | L  | M                  | N                | ① Gas pipe | ② Liquid pipe |  |
| SEZ-KD09NA | 700<br>(27-9/16)  | 752<br>(29-3/8)  | 798<br>(31-7/16)  | 660<br>(26)      | 7  | 600<br>(23-5/8)  | 800<br>(31-1/2)  | 660<br>(26)      | 5 | 500<br>(19-11/16) | 16 | 839<br>(33-1/8)    | 790<br>(31-1/8)  | ø9.52(3/8) | ø6.35(1/4)    |  |
| SEZ-KD12NA | 900<br>(35-7/16)  | 952<br>(37-1/2)  | 998<br>(39-5/16)  | 860<br>(33-7/8)  | 9  | 800<br>(31-1/2)  | 1000<br>(39-3/8) | 860<br>(33-7/8)  | 7 | 700<br>(27-9/16)  | 20 | 1039<br>(40-29/32) | 990<br>(39)      |            |               |  |
| SEZ-KD15NA | 1100<br>(43-5/16) | 1152<br>(45-3/8) | 1198<br>(47-3/16) | 1060<br>(41-3/4) | 11 | 1000<br>(39-3/8) | 1200<br>(47-1/4) | 1060<br>(41-3/4) | 9 | 900<br>(35-7/16)  | 24 | 1239<br>(48-25/32) | 1190<br>(46-7/8) |            |               |  |

- Note1. Use M10 screw for the suspension bolt (field supply).  
 2. Keep the service space for the maintenance at the bottom.  
 3. This chart indicates for SEZ-KD15NA model, which has 3 fans.  
 SEZ-KD09, 12NA models have 2 fans.  
 SEZ-KD18NA models have 4 fans.  
 4. In case an inlet duct is used, remove the air filter (supply with the unit), then install the filter (field supply) at suction side.



**HVAC Advanced Products Division**  
 3400 Lawrenceville Suwanee Rd  
 Suwanee, GA 30024  
 Tele: 678-376-2900 • Fax: 800-889-9904  
 Toll Free: 800-433-4822 (#3)  
 www.mehvac.com  
**Specifications are subject to change without notice.**