

**SUBMITTAL DATA: SEZ-KD09NA**

9,000 BTU/H HORIZONTAL-DUCTED INDOOR UNIT FOR MXZ MULTI-ZONE HEAT-PUMP SYSTEMS

Job Name:	Location:	Date:
Purchaser:	Engineer:	
Submitted to:	For <input type="checkbox"/> Reference <input type="checkbox"/> Approval <input type="checkbox"/> Construction	
System Designation:	Schedule No.:	

**GENERAL FEATURES**

- Ceiling-concealed ducted indoor unit for residential applications
- Ultra thin body: 7-7/8" high
- Built-in drain mechanism for condensate removal; lifts to 21-11/16"
- Air filter is included with indoor unit
- Quiet operation — as low as 23 dBA
- PAR-21MAA wired remote controller is included
- Indoor unit powered from outdoor unit using A-Control
- Automatic fan speed control
- Auto restart following a power outage
- Limited warranty: one year on parts and defects

**OPTIONAL ACCESSORIES**

- M-NET Control Adapter (MAC-399IF)
- External Heat Adapter (PAC-YU25HT)
- CN24 Relay Kit (CN24RELAY-KIT-CM)
- Three-pole Disconnect Switch (TAZ-MS303)

**Cooling\***

Rated Capacity . . . . . 9,000 Btu/h  
 Total Input . . . . . 60 W  
 Current . . . . . 0.51 A

**Heating\***

Rated Capacity . . . . . 10,900 Btu/h  
 Total Input . . . . . 40 W  
 Current . . . . . 0.39 A

\* Rating Conditions (Cooling) - Indoor: 80°F (27°C) DB / 67°F (19°C) WB.  
 Outdoor: 95°F (35°C) DB / 75°F (24°C) WB.  
 (Heating) - Indoor: 70°F (21°C) DB / 60°F (16°C) WB. Outdoor: 47°F (8°C) DB /  
 43°F (6°C) WB.

(For data on specific indoor units [all ducted, all non-ducted, and both ducted and non-ducted] combinations, see the MXZ Technical and Service Manual.)

**Electrical Requirements**

Power Supply . . . . . 208 / 230V, 1-Phase, 60 Hz  
 MCA . . . . . 1 A

**Voltage**

Indoor - Outdoor S1-S2 . . . . . AC 208 / 230V  
 Indoor - Outdoor S2-S3 . . . . . DC 24V



Indoor Unit: SEZ-KD09NA



Remote Controller: PAR-21MAA

**Fan**

Type x Quantity . . . . . Sirocco Fan x 2  
 Motor . . . . . Direct-driven DC Brushless Motor  
 Motor Output . . . . . .96 W  
 Airflow (Lo - Med - Hi) . . . . . 194 - 247 - 317 CFM  
 Air Filter . . . . . Polypropylene Honeycomb  
 External Static Pressure . . . . . 0.02 - 0.06 - 0.14 - 0.20" WG  
 Sound Pressure Level (Lo - Med - Hi) . . . . . 23 - 26 - 30 dB(A)

DIMENSIONS	UNIT INCHES / MM
W	31-1/8 / 790
D	27-9/16 / 700
H	7-7/8 / 200

Weight . . . . . 40 lbs. / 18 kg

Field Drainpipe Size O.D. . . . . 1-1/4" / 32 mm  
 Wall-mounted Remote Controller . . . . . PAR-21MAA  
 (See Data Submittal Sheet)

Refrigerant Type . . . . . R410A  
 Refrigerant Pipe Size O.D.  
 Gas Side . . . . . 3/8" / 9.52 mm  
 Liquid Side . . . . . 1/4" / 6.35 mm  
 Connection Method . . . . . Flared

**MXZ MULTI-ZONE HEAT-PUMP OUTDOOR UNITS**


Outdoor Unit: MXZ-3A30NA

**MXZ MULTI-ZONE SYSTEMS CAN INCLUDE:**

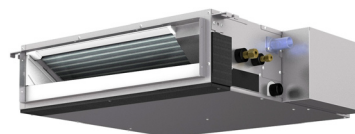
- All Horizontal-ducted Indoor Units:  
**SEZ-KD09, 12, 15, 18NA**
- Select Wall-mounted Indoor Units:  
**MSZ-A09, 12, 15, 17, 24NA**  
 and  
**MSZ-FD09, 12NA**
- A combination of both Horizontal-ducted and Wall-mounted Indoor Units  
 Refer to the separate submittal forms for the MSZ-A and MSZ-FD Indoor Units and MXZ Outdoor Units.

**MXZ COMPATIBLE INDOOR UNITS AND REMOTE CONTROLLERS**


Wall-mounted Indoor Unit: MSZ-A09, 12, 15, 17, 24NA



Wall-mounted Indoor Unit: MSZ-FD-NA


 Wireless Remote Controller -  
 Packaged with MSZ-A and MSZ-FD  
 (Optional Wired Remote Controller  
 PAR-21MAA)


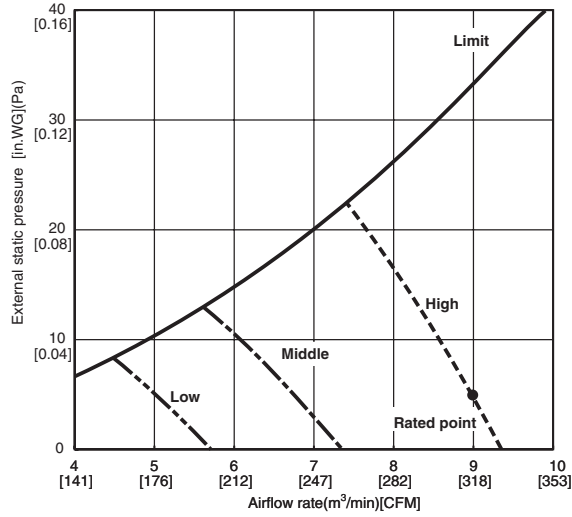
Horizontal-ducted Indoor Unit: SEZ-KD-NA


 Remote Controller  
 PAR-21MAA -  
 Packaged with SEZ


# SEZ-KD09NA INDOOR FAN PERFORMANCE AND CORRECTED AIR FLOW CHARTS

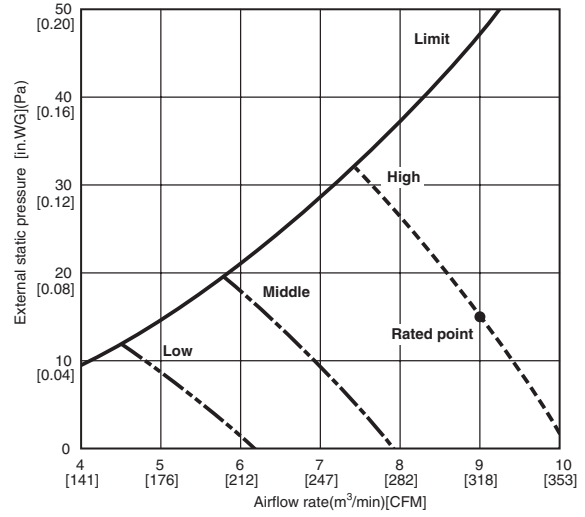
## SEZ-KD09NA

(External static pressure 0.02[in.WG](5Pa)) 208/230V 60Hz



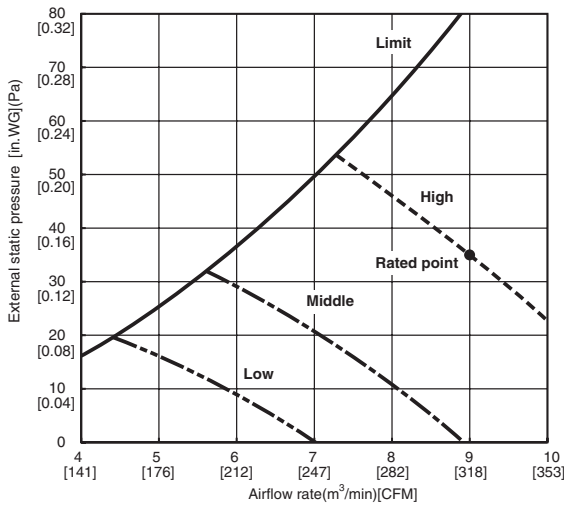
## SEZ-KD09NA

(External static pressure 0.06[in.WG](15Pa)) 208/230V 60Hz



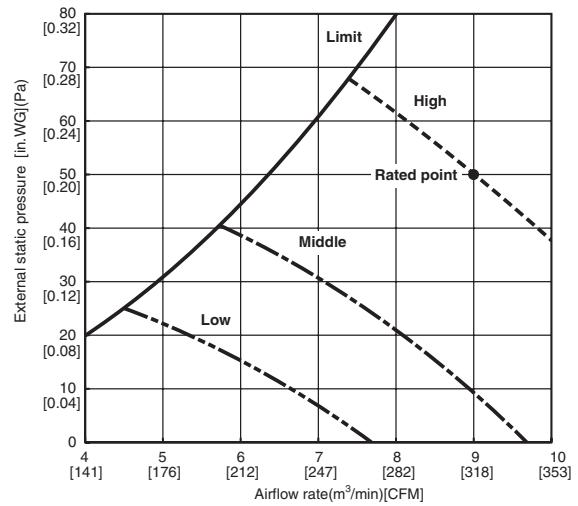
## SEZ-KD09NA

(External static pressure 0.14[in.WG](35Pa)) 208/230V 60Hz



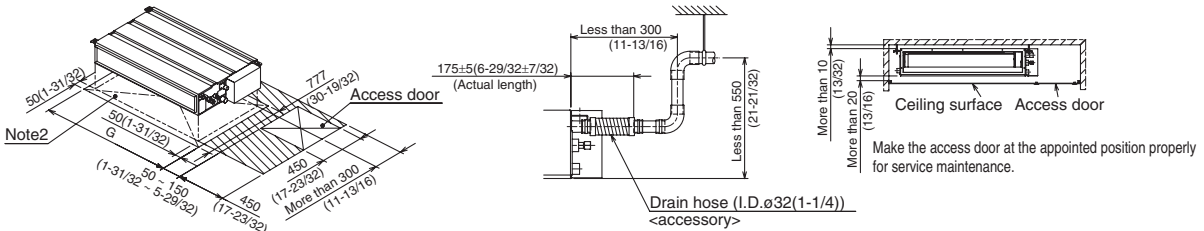
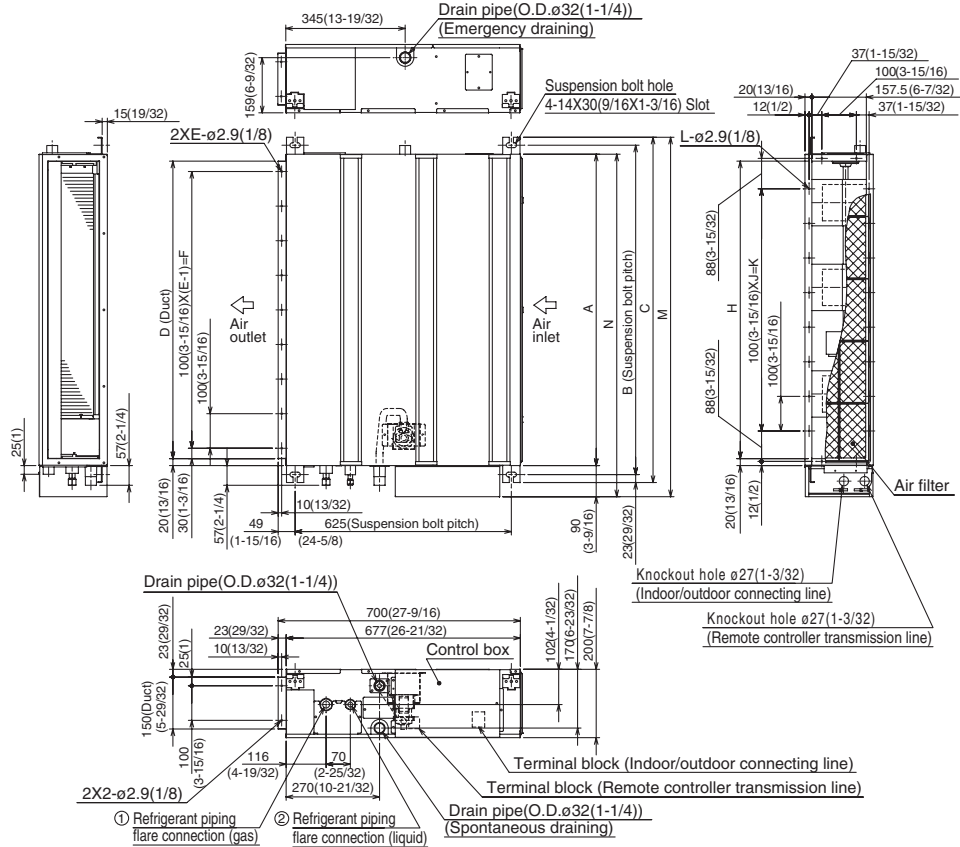
## SEZ-KD09NA

(External static pressure 0.20[in.WG](50Pa)) 208/230V 60Hz



# DIMENSIONS: SEZ-KD09NA

Unit : mm(in.)



Required space for service and maintenance

Model	mm(in.)													① Gas pipe		② Liquid pipe
	A	B	C	D	E	F	G	H	J	K	L	M	N	① Gas pipe	② Liquid pipe	
SEZ-KD09NA	700 (27-9/16)	752 (29-3/8)	798 (31-7/16)	660 (26)	7	600 (23-5/8)	800 (31-1/2)	660 (26)	5	500 (19-11/16)	16	839 (33-1/8)	790 (31-1/8)	ø9.52(3/8)	ø6.35(1/4)	
SEZ-KD12NA	900 (35-7/16)	952 (37-1/2)	998 (39-5/16)	860 (33-7/8)	9	800 (31-1/2)	1000 (39-3/8)	860 (33-7/8)	7	700 (27-9/16)	20	1039 (40-29/32)	990 (39)			
SEZ-KD15NA	1100 (43-5/16)	1152 (45-3/8)	1198 (47-3/16)	1060 (41-3/4)	11	1000 (39-3/8)	1200 (47-1/4)	1060 (41-3/4)	9	900 (35-7/16)	24	1239 (48-25/32)	1190 (46-7/8)			ø12.7(1/2)

- Note1. Use M10 screw for the suspension bolt (field supply).  
 Note2. Keep the service space for the maintenance at the bottom.  
 Note3. This chart indicates for SEZ-KD15NA model, which has 3 fans.  
 SEZ-KD09, 12NA models have 2 fans.  
 SEZ-KD18NA models have 4 fans.  
 Note4. In case an inlet duct is used, remove the air filter (supply with the unit), then install the filter (field supply) at suction side.



**HVAC Advanced Products Division**  
 3400 Lawrenceville Suwanee Rd  
 Suwanee, GA 30024  
 Tele: 678-376-2900 • Fax: 800-889-9904  
 Toll Free: 800-433-4822 (#3)  
 www.mehvac.com  
**Specifications are subject to change without notice.**