

**SUBMITTAL DATA: PEAD-A24AA . . .24,000 BTU/H HORIZONTAL-DUCTED INDOOR UNIT FOR MXZ-B MULTI-ZONE HEAT-PUMP SYSTEMS**

Job Name:	Location:	Date:
Purchaser:	Engineer:	
Submitted to:	For <input type="checkbox"/> Reference <input type="checkbox"/> Approval <input type="checkbox"/> Construction	
System Designation:	Schedule No.:	

**GENERAL FEATURES**

- Horizontal-ducted indoor unit features medium static pressure capability
- Thin body: 9-7/8" high
- Built-in drain mechanism for condensate removal; lifts to 27-9/16"
- Air filter is included with indoor unit
- Quiet operation—both indoor and outdoor units
- Automatic fan speed control
- Auto restart following a power outage
- Self-check function—integrated diagnostics
- Knockout for ventilation air
- Limited warranty: five years on parts and defects and seven years on compressors

**OPTIONAL ACCESSORIES**
**Indoor Unit**

- Filter Box with MERV 13 Filters (FBM2-3)

**Controller Options**

- Wall-mounted Wired Remote Controller (PAR-21MAA)
- CN51 Connector for Multiple Remote Controller Adapters/Duct Fan Controller (PAC-725AD)
- External Heat Adapter CN24 Relay Kit (CN24RELAY-KIT-CM)
- CN32 Connector for Remote On/Off (PAC-715AD)
- Remote Temperature Sensor (PAC-SE41TS)
- Remote Operation Adapter - Display and On/Off (PAC-SF40RM)
- Hand-held Wireless Remote Controller (PAR-FL32MA-E; req. PAR-FA32MA-E)
- Wireless Signal Receiver Module (PAR-FA32MA-E)
- Lockdown Bracket for Hand-held Controller (RCMKP1CB)
- Control/Service Tool (PAC-SK52ST)

**Cooling Capacity\*** . . . . .24,000 Btu/h

**Heating Capacity at 47°F\*** . . . . .26,000 Btu/h

\* Rating Conditions (Cooling) - Indoor: 80°F (27°C) DB, 67°F (19°C) WB; Outdoor: 95°F (35°C) DB, 75°F (24°C) WB.

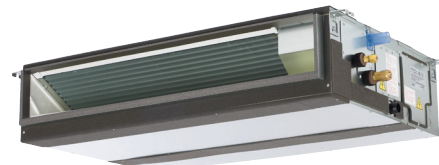
(Heating at 47°F) - Indoor: 70°F (21°C) DB, 60°F (16°C) WB; Outdoor: 47°F (8°C) DB, 43°F (6°C) WB.  
(For data on specific indoor units [all ducted, all non-ducted, and both ducted and non-ducted] combinations, see the Technical and Service Manuals.)

**Electrical Requirements**

Power Supply . . . . .208 / 230V, 1-Phase, 60 Hz  
MCA . . . . .1 A

**Voltage**

Indoor - Outdoor S1-S2 . . . . . AC 208 / 230V  
Indoor - Outdoor S2-S3 . . . . . DC 24V



Indoor Unit: PEAD-A24AA

Fan Type x Quantity . . . . . Sirocco fan x 2  
Fan Motor Type . . . . . Direct-driven DC Brushless Motor  
Fan Motor . . . . . 2.10 F.L.A.

Airflow (Lo - Med - Hi) . . . . . 512 - 636 - 742 Dry CFM  
494 - 600 - 671 Wet CFM

Air Filter . . . . . Polypropylene Honeycomb  
External Static Pressure . . . . . 0.14 - 0.20 - 0.28 - 0.40 - 0.60" WG  
Sound Pressure Level (Lo - Med - Hi) . . . . . 30 - 33 - 37 dB(A)

DIMENSIONS	UNIT INCHES / MM
W	43-5/16 / 1,100
D	28-7/8 / 732
H	9-7/8 / 250

Weight . . . . . 73 lbs. / 33 kg  
External Finish . . . . . Galvanized-steel Sheet  
Field Drainpipe Size O.D. . . . . 1-1/4" / 32 mm

Refrigerant Type . . . . . R410A  
Refrigerant Pipe Size O.D.  
Gas Side . . . . . 5/8" / 15.88 mm  
Liquid Side . . . . . 3/8" / 9.52 mm  
Connection Method . . . . . Flared

**MXZ-B SERIES HEAT-PUMP OUTDOOR UNITS**

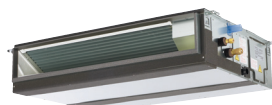

MULTI-ZONE OUTDOOR UNIT

**MXZ-B MULTI-ZONE SYSTEMS CAN INCLUDE:**

- Ducted Indoor Units:  
**SEZ-KD09,12,15,18NA, PEAD-A24AA**
  - Nonducted Indoor Units:  
**MSZ-GE06,09,12,15,18,24NA,  
MSZ-FE09,12,18NA, MFZ-KA09,12,18NA,  
PCA-A24KA, SLZ-KA09,12,15NA, and  
PLA-A12,18,24BA**
  - A combination of both Ducted and Nonducted Indoor Units
- Refer to the separate submittal forms for the MSZ-GE, MSZ-FE, MFZ-KA, SEZ-KD, SLZ-KA, PEAD, PCA, PLA Indoor Units, and MXZ Outdoor Units.



MSZ-GE



SEZ and PEAD-A24AA



MSZ-FE



MFZ-KA



PCA-A24KA



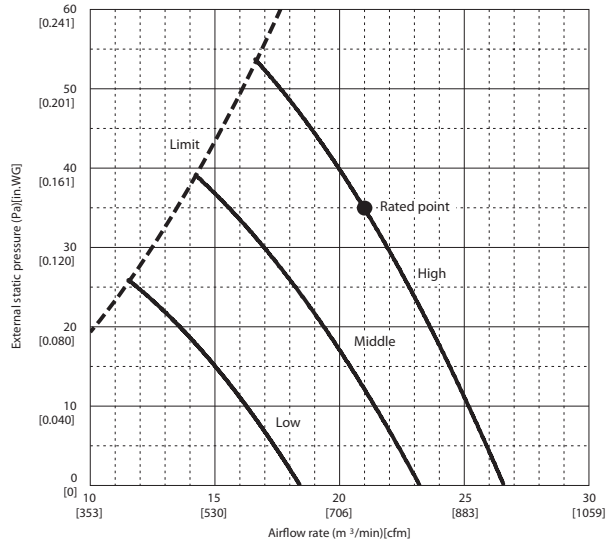
SLZ and PLA-A12,18,24BA



# INDOOR UNIT PEAD-A24AA FAN PERFORMANCE AND AIRFLOW RATES

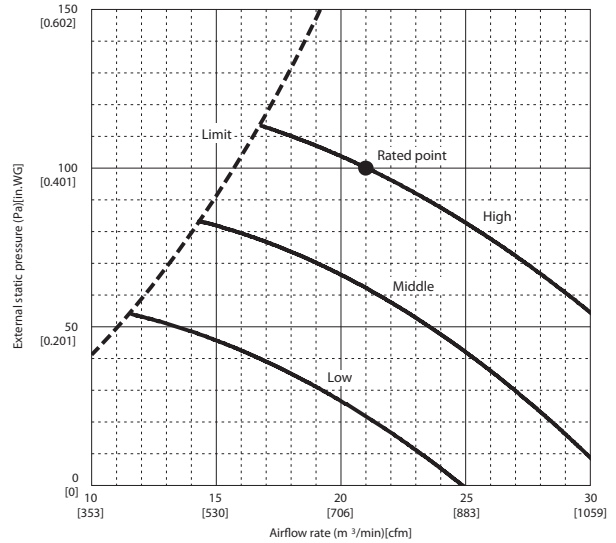
## PEAD-A24AA

(External static pressure 35Pa) 208-230V 60Hz



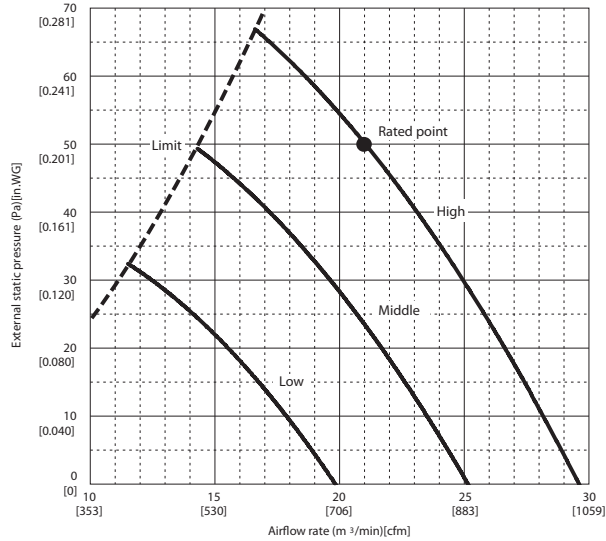
## PEAD-A24AA

(External static pressure 100Pa) 208-230V 60Hz



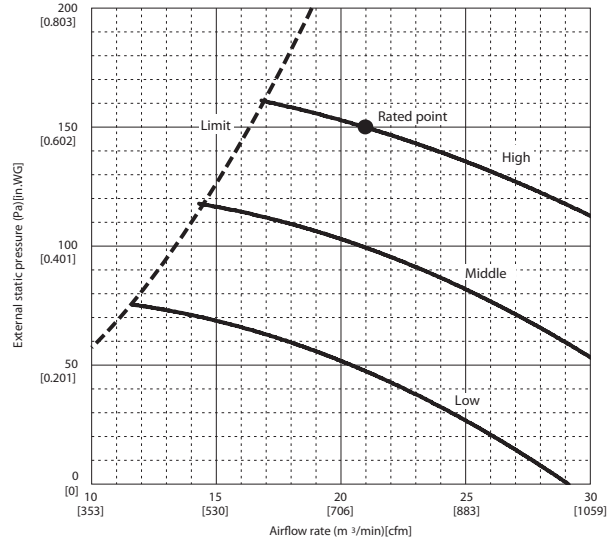
## PEAD-A24AA

(External static pressure 50Pa) 208-230V 60Hz



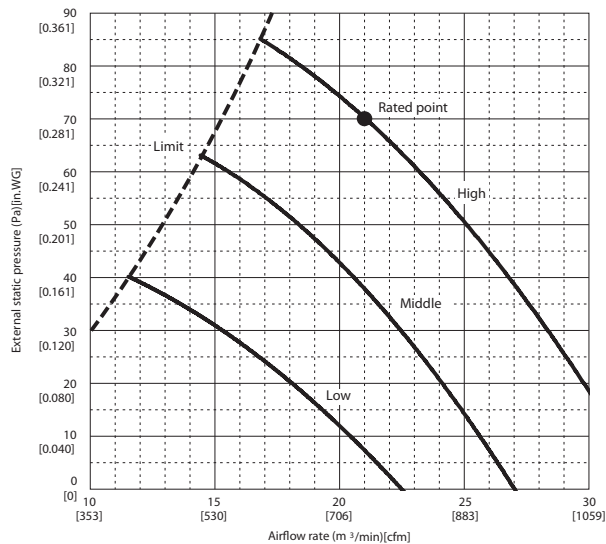
## PEAD-A24AA

(External static pressure 150Pa) 208-230V 60Hz

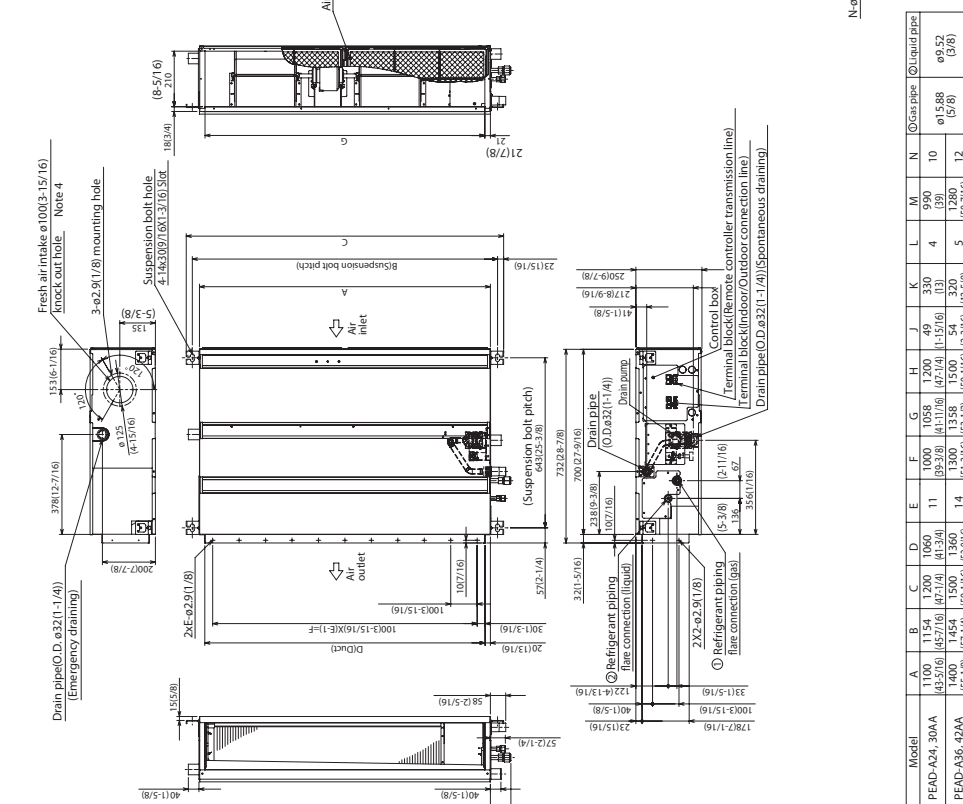
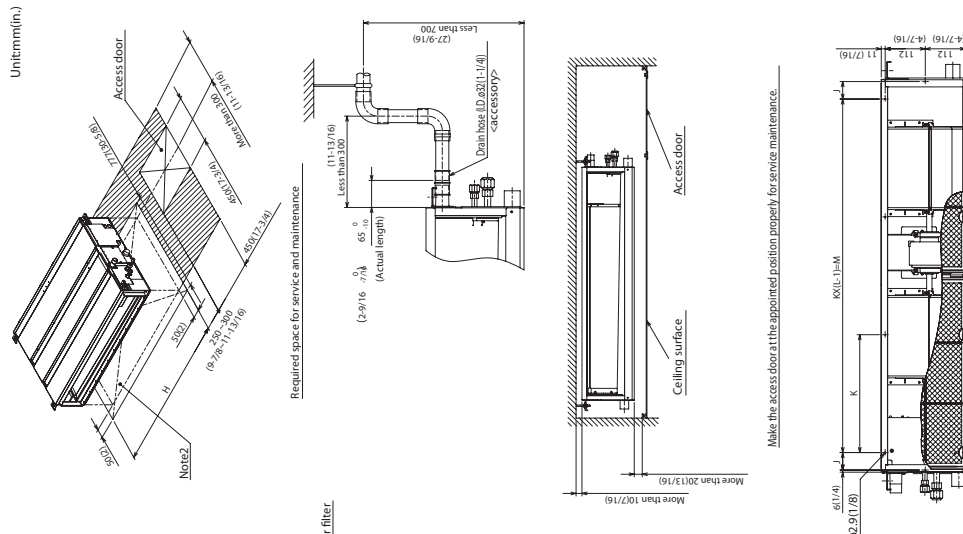


## PEAD-A24AA

(External static pressure 70Pa) 208-230V 60Hz



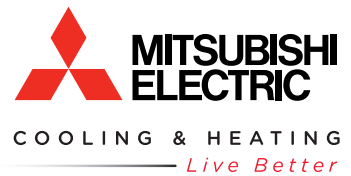
# DIMENSIONS: PEAD-A24AA



- NOTE 1. Use M10 screw for the Suspension bolt (field supply).  
 2. Keep the service space for the maintenance at the bottom.  
 3. This chart indicates for PEAD-A24-30-36-42AA models, which have 2 fans.  
 4. In case of the inlet duct is used, remove the air filter (supply with the unit), then install the filter (field supply) at suction side.



Intertek



3400 Lawrenceville Suwanee Rd  
 Suwanee, GA 30024  
 Tele: 678-376-2900 • Fax: 800-889-9904  
 Toll Free: 800-433-4822 (#3)  
 www.mehvac.com  
**Specifications are subject to change without notice.**