



Multi Zone Specification

ARU9RML Multizone Wall Mount

THE POSSIBILITIES ARE INFINITE

Job Name: _____
 Location: _____
 Engineer: _____
 Submitted to: _____
 Submitted by: _____
 Reference: _____

Approval: _____
 Date: _____
 Construction: _____
 Unit #: _____
 Drawing #: _____

| | | |
|----------------------|---------------|---------------------------|
| Power | V/Hz/P | 230/60/1 |
| Fan type | | Forward Curve |
| No. Motors | (W) | 11-1 |
| CFM [.0 in.WG] | (Hi,Me,Lo) | 294/241/218 |
| CFM [.16 in.WG] | (Hi,Me,Lo) | 250/210/195 |
| Sound Pressure Level | db (Hi,Me,Lo) | 39/35/32 |
| F.L.A. | (A) | .2 |
| Refrigerant | | 410A |
| O.D. Discharge | in (mm) | Ø1/4" (6.35) |
| O.D. Suction | in (mm) | Ø3/8" (9.52) |
| Dimensions | | H x W x D |
| Uncrated | (in) | 8-35/64 x 25-5/8 x 23-1/2 |
| | (mm) | (217 x 650 x 596) |
| Crated | (in) | 12-3/4 x 20-29/32 x 27 |
| | (mm) | (324 x 785 x 686) |
| Weight | | |
| Net | lbs. (kg) | 20 (9.5) |
| Gross Shipping | lbs. (kg) | 26 (12) |

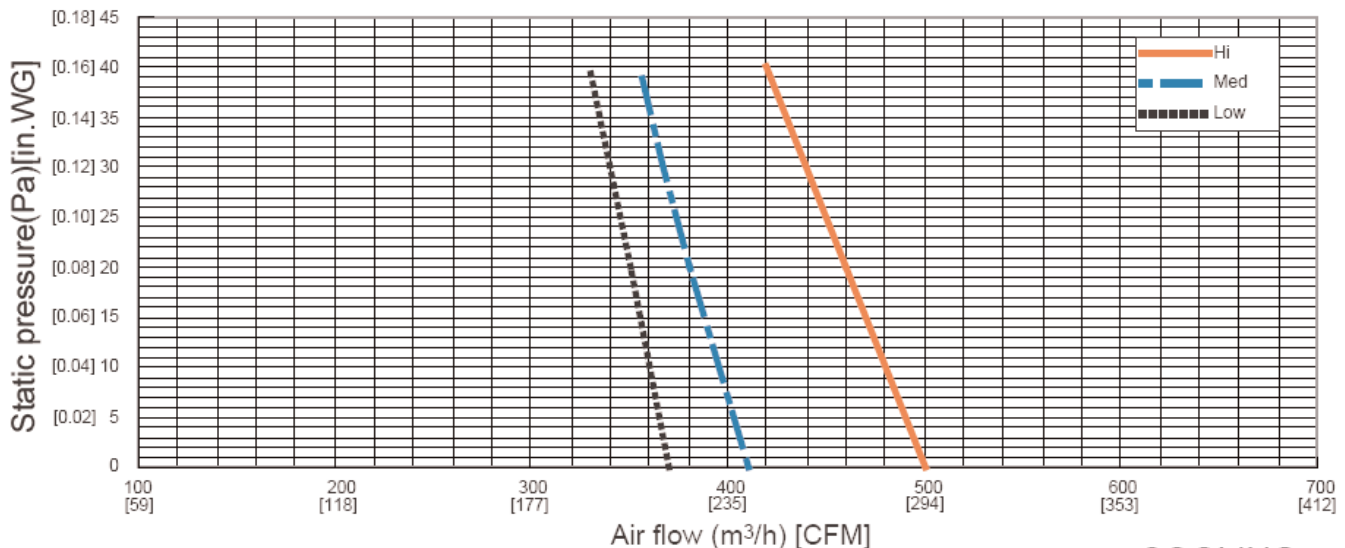
| | | |
|----------------------------------|------------|-----------------------|
| Cooling Capacity | (BTU/h) | 9,500 (5,100-13,000) |
| Moisture Removal | pt/h (l/h) | 1.9 (0.9) |
| Heating Capacity | (BTU/h) | 11,000 (5,100-13,000) |
| Temperature Setting Range | | |
| Cooling | °F(°C) | 64~90 (18~32) |
| Heating | °F(°C) | 60~80 (16~31) |
| Drain Pipe Size** | OD in (mm) | Ø1-1/32 (26) |
| | ID in (mm) | Ø27/32 (21.5) |
| Remote Control Type | | Wired |
| Electrical Connection* | AWG | 14/3 with ground |

*Power and communication are fed from the outdoor unit.

**Adapter to 3/4" PVC included with unit.



Q-h Characteristic curve



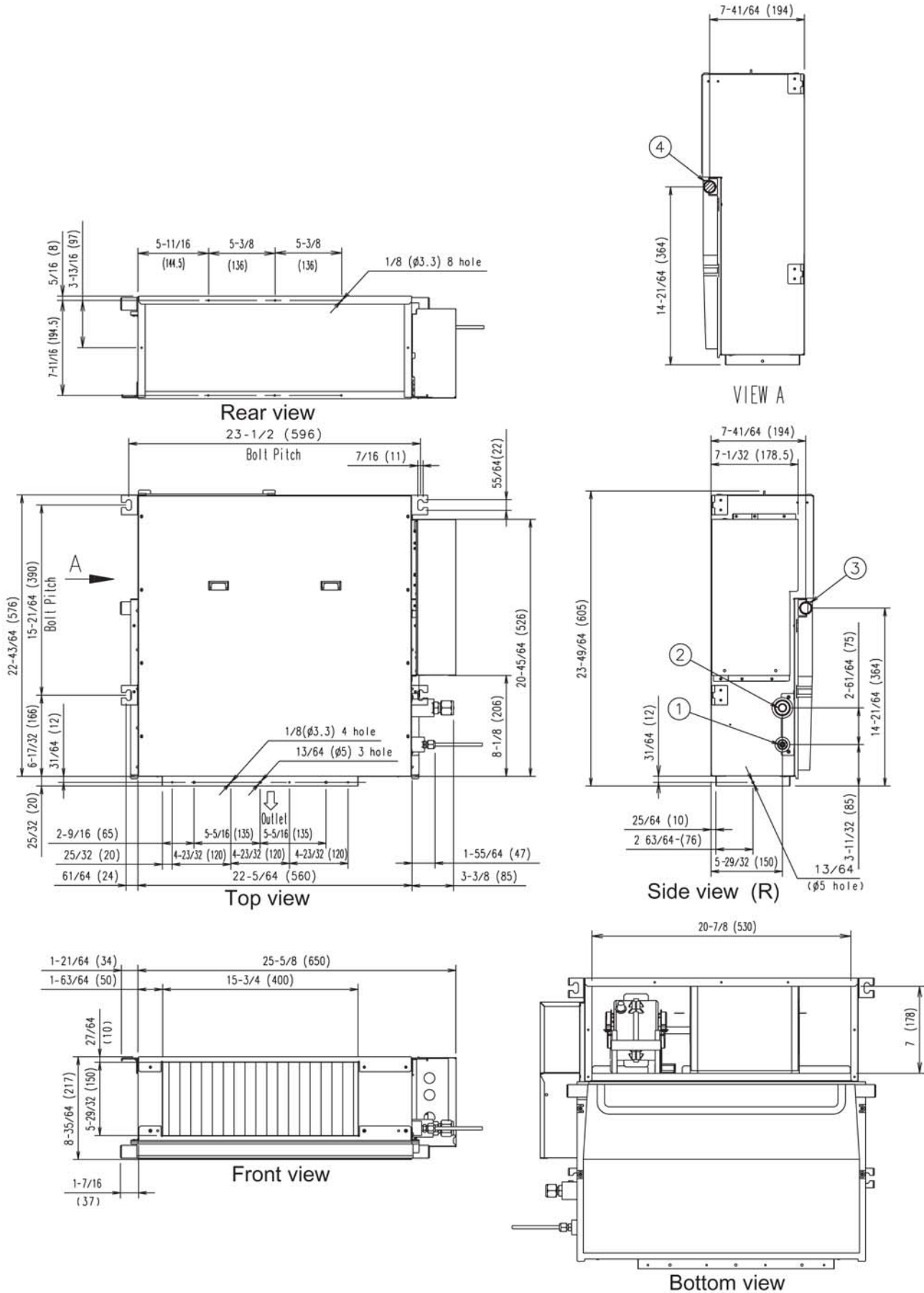
Fujitsu General America, Inc.
 Fairfield, NJ 07004
 Toll Free: 1-888-888-3424
 Fax: (973) 836-0447
 www.fujitsugeneral.com

Note:
 Specifications are based on the following conditions.
 Power source of specifications : 230V
 Cooling: Indoor temperature of 80°F(26.67°C)DB / 67°F(19.44°C)WB, and outdoor temperature of 95°F(35°C)DB/75°F(23.89°C)WB.
 Heating: Indoor temperature of 70°F(21.11°C)DB / 60°F(15.56°C)WB, and outdoor temperature of 47°F(8.33°C)DB/43°F(6.11°C)WB.
 Pipe length : 24ft. 7in.(7.5m), Height difference : 0 ft.(0m) [Outdoor unit - Indoor unit]
 Fujitsu products are subject to continuous improvements. Fujitsu reserves the right to modify product design, specifications and information in this data sheet without notice and without incurring any obligations.

CONCEALED CEILING TYPE

MODEL : ARU9R

[Unit : Inch(mm)]



① Refrigerant pipe flare connection (Liquid)

② Refrigerant pipe flare connection (Gas)

③④ Drain pipe connection