



Multi Zone Specification

ARU12RML Multizone Wall Mount

THE POSSIBILITIES ARE INFINITE

Job Name: _____
 Location: _____
 Engineer: _____
 Submitted to: _____
 Submitted by: _____
 Reference: _____

Approval: _____
 Date: _____
 Construction: _____
 Unit #: _____
 Drawing #: _____

Power	V/Hz/P	230/60/1
Fan type		Forward Curve x 2
No. Motors	(W)	21-1
CFM [.0 in.WG]	(Hi,Me,Lo)	412/377/324
CFM [.16 in.WG]	(Hi,Me,Lo)	306/283/253
Sound Pressure Level	db (Hi,Me,Lo)	36/34/31
F.L.A.	(A)	.34
Refrigerant		410A
O.D. Discharge	in (mm)	Ø1/4" (6.35)
O.D. Suction	in (mm)	Ø3/8" (9.52)
Dimensions		H x W x D
Uncrated	(in)	8-35/64 x 37-1/64 x 23-1/2
	(mm)	(217 x 940 x 596)
Crated	(in)	12-3/4 x 42-5/16 x 27
	(mm)	(324 x 1075 x 686)
Weight		
Net	lbs. (kg)	55 (25)
Gross Shipping	lbs. (kg)	64 (29)

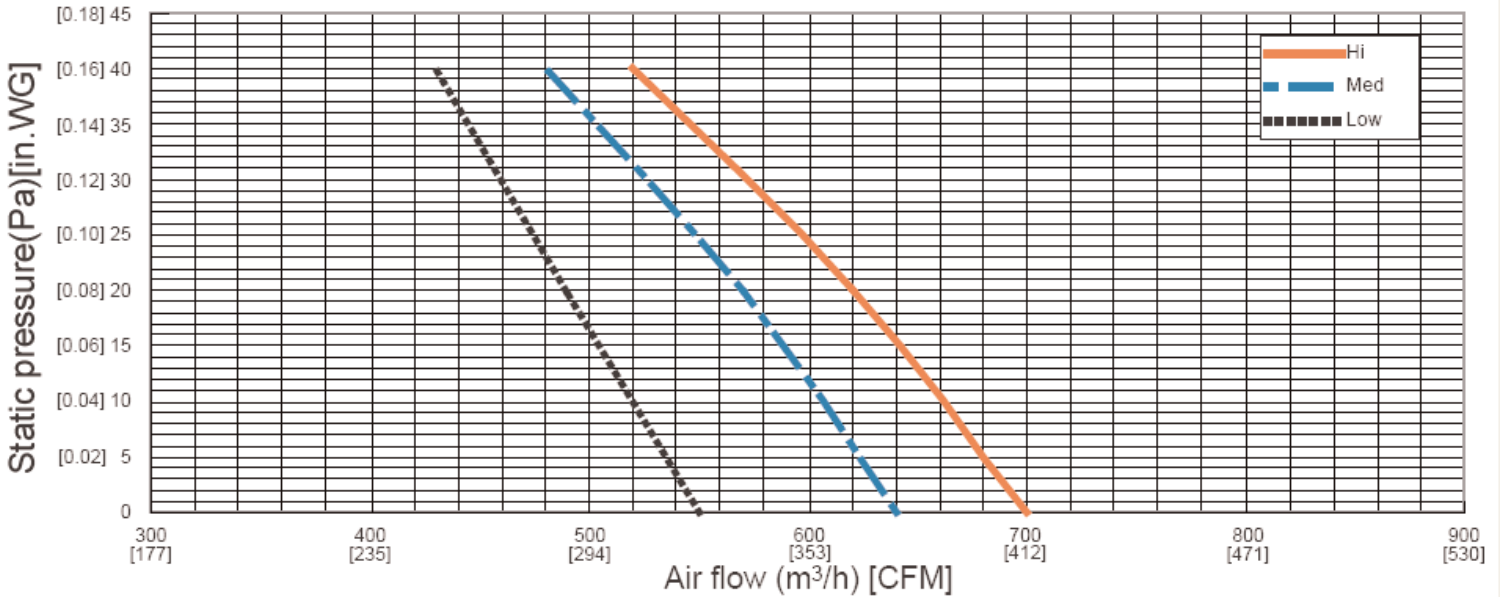
Cooling Capacity	(BTU/h)	12,000 (5,100-13,600)
Moisture Removal	pt/h (l/h)	2.5 (1.2)
Heating Capacity	(BTU/h)	14,000 (5,100-15,400)
Temperature Setting Range		
Cooling	°F(°C)	64~90 (18~32)
Heating	°F(°C)	60~80 (16~31)
Drain Pipe Size**	OD in (mm)	Ø1-1/32 (26)
	ID in (mm)	Ø27/32 (21.5)
Remote Control Type		Wired
Electrical Connection*	AWG	14/3 with ground

*Power and communication are fed from the outdoor unit.

**Adapter to 3/4" PVC included with unit.



Q-h Characteristic curve

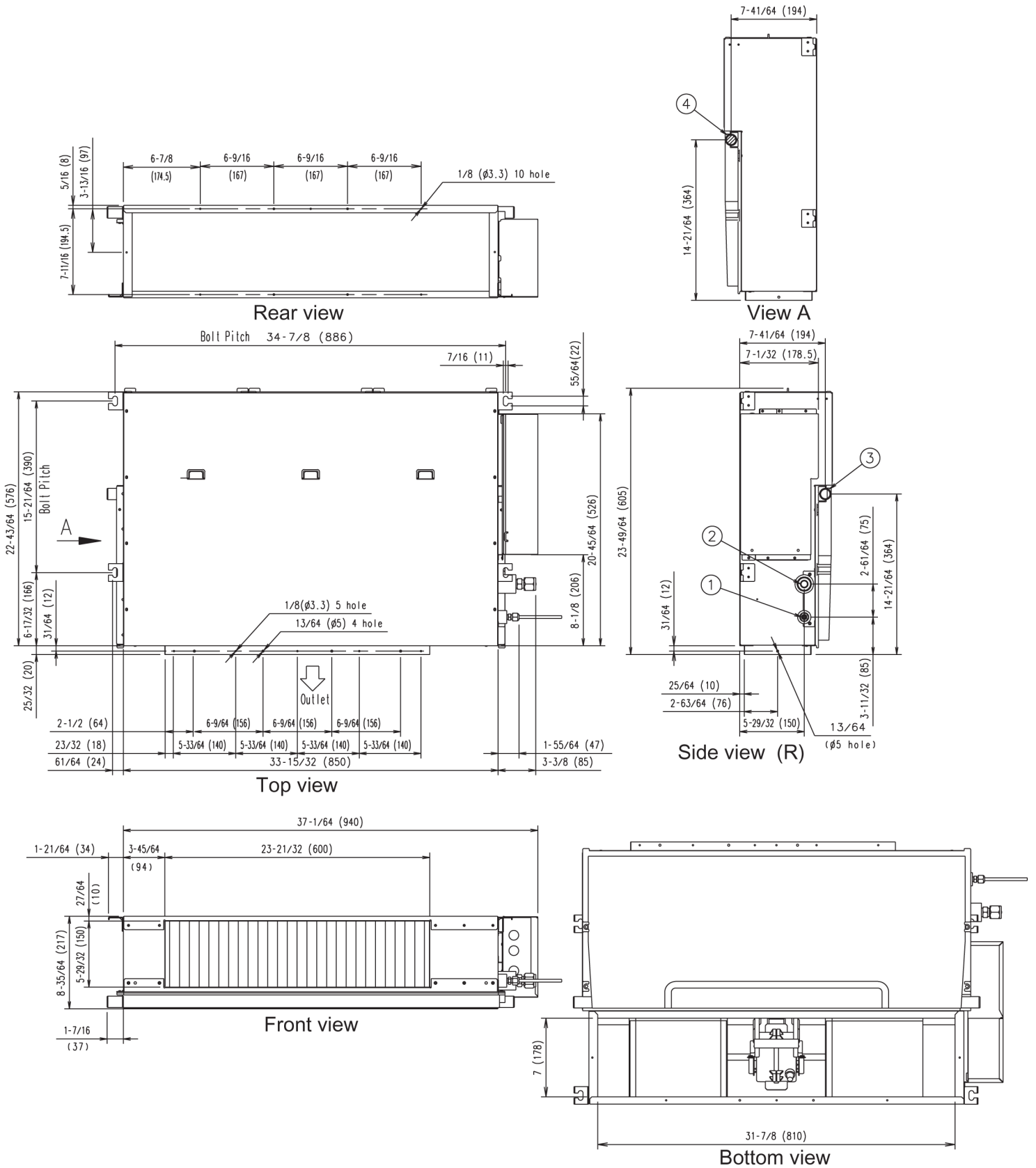


Fujitsu General America, Inc.
 Fairfield, NJ 07004
 Toll Free: 1-888-888-3424
 Fax: (973) 836-0447
 www.fujitsugeneral.com

Note:
 Specifications are based on the following conditions.
 Power source of specifications : 230V
 Cooling: Indoor temperature of 80°F(26.67°C)DB / 67°F(19.44°C)WB, and outdoor temperature of 95°F(35°C)DB/75°F(23.89°C)WB.
 Heating: Indoor temperature of 70°F(21.11°C)DB / 60°F(15.56°C)WB, and outdoor temperature of 47°F(8.33°C)DB/43°F(6.11°C)WB.
 Pipe length : 24ft. 7in.(7.5m), Height difference : 0 ft.(0m) [Outdoor unit - Indoor unit]
 Fujitsu products are subject to continuous improvements. Fujitsu reserves the right to modify product design, specifications and information in this data sheet without notice and without incurring any obligations.

■ MODEL : ARU12R, ARU18R

[Unit : Inch(mm)]



- ① Refrigerant pipe flare connection (Liquid)
- ② Refrigerant pipe flare connection (Gas)
- ③④ Drain pipe connection