




## Mitsubishi HVAC systems that Qualified for Tax Credit



By PACIFIC HVAC Air conditioner – Tel 201-266-0049

Model	CAPACITY	SEER	EER	HSPF	Energy Star	TAX-CREDIT
-------	----------	------	-----	------	-------------	------------





### Single Zone Air conditioner /Heat Pump

Wall mount <a href="#">MSY-GE09NA</a> <a href="#">MUY-GE09NA</a>	9,000 Btu	21	13.6	n/a	Yes	✓ 
Wall mount <a href="#">MSY-GE15NA</a> <a href="#">MUY-GE15NA</a>	14,000 Btu	21	13	n/a	Yes	✓ 
Wall mount <a href="#">MSZ-FE09NA</a> <a href="#">MUZ-FD09NA</a>	9,000 Btu	23	13.8	10	Yes	✓ 
Wall mount <a href="#">MSZ-FE12NA</a> <a href="#">MUZ-FD12NA</a>	9,000 Btu	22	12.5	10	Yes	✓ 
Wall mount <a href="#">MSZ-FE09NA</a> <a href="#">MUZ-FE09NA</a>	9,000 Btu	26	15.5	10	Yes	✓ 
Wall mount <a href="#">MSZ-FE12NA</a> <a href="#">MUZ-FE12NA</a>	12,000 Btu	23	12.9	10.5	Yes	✓ 
Wall mount <a href="#">MSZ-GE09NA</a> <a href="#">MUZ-GE09NA</a>	9,000 Btu	21	13.6	10	Yes	✓ 
Wall mount <a href="#">MSZ-GE12NA</a> <a href="#">MUZ-GE12NA</a>	12,000 Btu	20.25	12.5	10	Yes	✓ 
Wall mount <a href="#">MSZ-GE15NA</a> <a href="#">MUZ-GE15NA</a>	14,000 Btu	21	13	10	Yes	✓ 
Ducted unit <a href="#">SEZ-KD12NA</a> <a href="#">SUZ-KA12NA</a>	11,500 Btu	16	12.5	10	Yes	✓ 
Ducted unit <a href="#">SEZ-KD18NA</a> <a href="#">SUZ-KA18NA</a>	17,200 Btu	17.5	12.5	10	Yes	✓ 

## Single Zone Continue Air conditioner /Heat Pump

Ceiling cassette <u>PLA-A36BA</u> <u>PUZ-HA36NHA2</u>	34,000 Btu	17	12.6	10	Yes	✓ 
Ducted unit PEA-A18AA (x2) PUZ-HA36NHA2	34,000 Btu	16.8	12.5	10.4	Yes	✓ 

## Multi Zone Air conditioner /Heat Pump

Model	CAPACITY	SEER	EER	HSPF	Energy Star	TAX CREDIT
<b>Wall mount</b> MSZ-GE09NA (x2)	 20,000 Btu	18	12.5	8.9	Yes	✓ 
<b>Outdoor</b> MXZ-2B20NA						
<b>Wall mount</b> MSZ-GE06NA (x2) + MSZ-GE09NA	22,000 Btu	17.5	12.5	9.3	Yes	✓ 
<b>Outdoor</b> MXZ-3B24NA						
<b>Wall mount</b> MSZ-GE06NA (x2) + MSZ-GE12NA	22,000 Btu	17.5	12.5	9.3	Yes	✓ 
<b>Outdoor</b> MXZ-3B24NA						

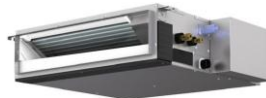
Outdoor



Wall Mount



Ducted unit



Ceiling Cassette

